

EDWARD BURTYNSKY AVAILABLE WORKS



Edward Burtynsky

Rock of Ages #17, Abandoned Section, Adam-Pirie Quarry, Barre, Vermont

1992/1999

chromogenic print

From an edition of 15 + 2 APs

signed, titled, dated and editioned verso mount

18 x 22 in. image on 26 x 30 in. mount

\$14,000 framed with anti-reflective Water White glazing

ROBERT KOCH GALLERY



Edward Burtynsky

Rock of Ages #14, Abandoned Granite Section, E.L. Smith Quarry, Barre, VT

1992/2000

chromogenic print

Unique Print

signed, titled, dated and editioned verso mount

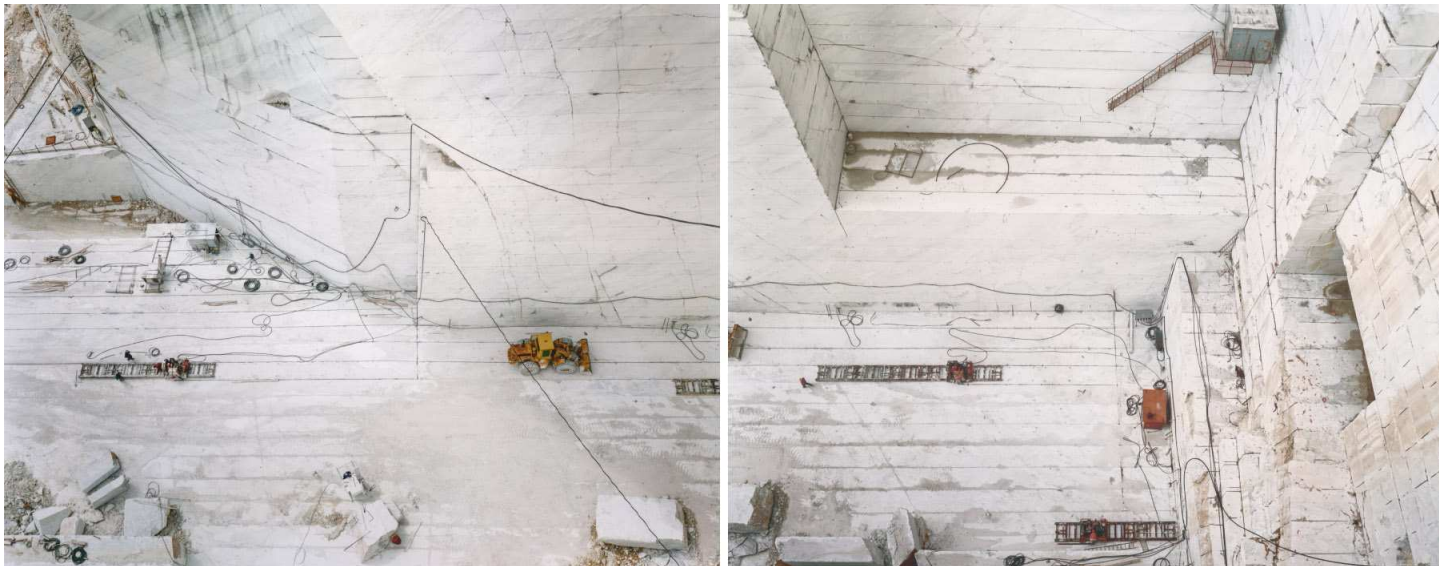
48 x 60 in. image and mount

\$75,000 framed with anti-reflective Water White glazing

49 GEARY STREET | SAN FRANCISCO, CALIFORNIA | 94108

TEL 415.421.0122 | FAX 415.421.6306 | E-MAIL INFO@KOCHGALLERY.COM | WEB WWW.KOCHGALLERY.COM

ROBERT KOCH GALLERY



Edward Burtynsky

Carrara Marble Quarries #24 & #25 diptych, Carrara, Italy
1993/1999

chromogenic print on Kodak Professional Paper

From an edition of 10 + 2 APs

signed, titled, dated and editioned verso mounts

2 parts: each 27 x 34 in. image on 34 x 41 in. mount

\$48,000 framed with anti-reflective Water White glazing

ROBERT KOCH GALLERY



Edward Burtynsky

Carrara Marble Quarries #24, Carrara, Italy

1993/1995

chromogenic print

From an edition of 15 + 2 APs

signed, titled, dated and editioned verso mount

18 x 22 in. image

\$14,000 framed with anti-reflective Water White glazing

49 GEARY STREET | SAN FRANCISCO, CALIFORNIA | 94108

TEL 415.421.0122 | FAX 415.421.6306 | E-MAIL INFO@KOCHGALLERY.COM | WEB WWW.KOCHGALLERY.COM



Edward Burtynsky

Mines #13, Inco-Abandoned Mine Shaft, Crean Hill Mine, Sudbury, Ontario

1984/2003

chromogenic print

From an edition of 10, plus 2 APs

signed, titled, dated and editioned verso mount

27 x 34 in. image on 33 x 40 in. mount

\$15,000 framed with anti-reflective Water White glazing

ROBERT KOCH GALLERY



Edward Burtynsky

Railcuts #1, C.N. Track, Skihist Provincial Park, British Columbia
1985/2003

chromogenic print

From an edition of 10 + 2 APs

signed, titled, dated and editioned verso mount

27 x 34 in. image on 34 x 41 in. mount

\$16,000 framed with anti-reflective Water White glazing

49 GEARY STREET | SAN FRANCISCO, CALIFORNIA | 94108

TEL 415.421.0122 | FAX 415.421.6306 | E-MAIL INFO@KOCHGALLERY.COM | WEB WWW.KOCHGALLERY.COM



Edward Burtynsky

Shipbreaking #9A, Chittagong, Bangladesh

2000/2001

chromogenic print

From an edition of 10 + 2 APs

signed, titled, dated and editioned verso mount

27 x 34 in. image on 34 x 41 in. mount

\$24,000 framed with anti-reflective Water White glazing

ROBERT KOCH GALLERY



Edward Burtynsky

Shipbreaking #9A/B, Chittagong, Bangladesh

2000/2002

chromogenic print

From an edition of 5 + 2 APs

signed, titled, dated and editioned verso mounts

two images: left panel 48 x 62 in., right panel 48 x 61 1/2 in. images & mounts

\$95,000 framed with anti-reflective Water White glazing

49 GEARY STREET | SAN FRANCISCO, CALIFORNIA | 94108

TEL 415.421.0122 | FAX 415.421.6306 | E-MAIL INFO@KOCHGALLERY.COM | WEB WWW.KOCHGALLERY.COM



Edward Burtynsky

Shipbreaking #10, Chittagong, Bangladesh

2000/2001

chromogenic print

signed, titled, dated and editioned verso mount

18 x 22 in. image on 26 x 29 in. mount

From an edition of 15 + 2 APs

\$14,000 framed with anti-reflective Water White glazing

27 x 34 in. image on 36 x 43 in. mount

From an edition of 10 + 2 APs

\$24,000 framed with anti-reflective Water White glazing



Edward Burtynsky

Shipbreaking #12, Chittagong, Bangladesh

2000 / 2001

chromogenic print

From an edition of 5 + 2 APs

signed, titled, dated and editioned verso mount

40 x 50 in. image on a 47 1/2 x 57 1/2 in. mount

\$34,000 framed with anti-reflective Water White glazing



Edward Burtynsky

Shipbreaking #13, Chittagong, Bangladesh

2000/2001

chromogenic print

From an edition of 15, plus 2 APs

signed, titled, dated and editioned verso mount

18 x 22 in. image on 27 x 31 in. mount

\$14,000 framed with anti-reflective Water White glazing

ROBERT KOCH GALLERY



Edward Burtynsky

Shipbreaking #47, Chittagong, Bangladesh

2001/2001

chromogenic print

From an edition of 10, plus 2 APs

signed, titled, dated and editioned verso mount

27 x 34 in. image on 34 x 41 in. mount

\$21,000 framed with anti-reflective Water White glazing

49 GEARY STREET | SAN FRANCISCO, CALIFORNIA | 94108

TEL 415.421.0122 | FAX 415.421.6306 | E-MAIL INFO@KOCHGALLERY.COM | WEB WWW.KOCHGALLERY.COM



Edward Burtynsky

Shipyard #11, Qili Port, Zhejiang Province, China

2005

chromogenic print

signed, titled, dated and editioned verso mount

34 x 27 in. image on 41 x 34 in. mount

From an edition of 10 + 2 APs

\$24,000 framed with anti-reflective Water White glazing

50 x 40 in. image on 58 x 48 in. mount

From an edition of 9 + 2 APs

\$55,000 framed with anti-reflective Water White glazing

ROBERT KOCH GALLERY



Edward Burtynsky

Shipyard #13, Qili Port, Zhejiang Province, China

2005/2006

chromogenic print

From an edition of 10 + 2 APs

signed, titled, dated and editioned verso mount

34 x 27 in. image on 41 x 34 in. mount

\$17,000 framed with anti-reflective Water White glazing

49 GEARY STREET | SAN FRANCISCO, CALIFORNIA | 94108

TEL 415.421.0122 | FAX 415.421.6306 | E-MAIL INFO@KOCHGALLERY.COM | WEB WWW.KOCHGALLERY.COM

ROBERT KOCH GALLERY



Edward Burtynsky

Bao Steel #8, Shanghai, China

2005/2005

chromogenic print

From an edition of 6, plus 1 AP

signed, titled, dated and editioned verso mount

40 x 80 in. image on 40 x 80 in. mount

\$65,000 framed with anti-reflective Water White glazing

49 GEARY STREET | SAN FRANCISCO, CALIFORNIA | 94108

TEL 415.421.0122 | FAX 415.421.6306 | E-MAIL INFO@KOCHGALLERY.COM | WEB WWW.KOCHGALLERY.COM